

Ce-Fe (Cerium-Iron)

H. Okamoto

The Ce-Fe phase diagram in [Massalski2] was redrawn from the original form of [1993Zha]. The enlargement on the Ce-rich portion of the diagram in [Massalski2] was deleted in [1993Zha] due to violation of the phase rule.

[2006Su] assessed the Ce-Fe system by thermodynamic modeling. The calculated phase boundaries (Fig. 1) are in good agreement with the phase boundary data used by [1993Zha] for determining the phase diagram as given in [Massalski2]. Figure 2 shows the enlargement on the Fe-rich portion.

References

1993Zha: W. Zhang, G. Liu, and K. Han, Ce-Fe (Cerium-Iron), *Phase Diagrams of Binary Iron Alloys*, H. Okamoto, Ed., ASM International, Materials Park, OH, 1993, p 89-92

2006Su: X. Su and J.C. Tedenac, Thermodynamic Modeling of the Ternary Ce-Fe-Sb System: Assessment of the Ce-Sb and Ce-Fe Systems, *Calphad*, 2006, **30**, p 455-460

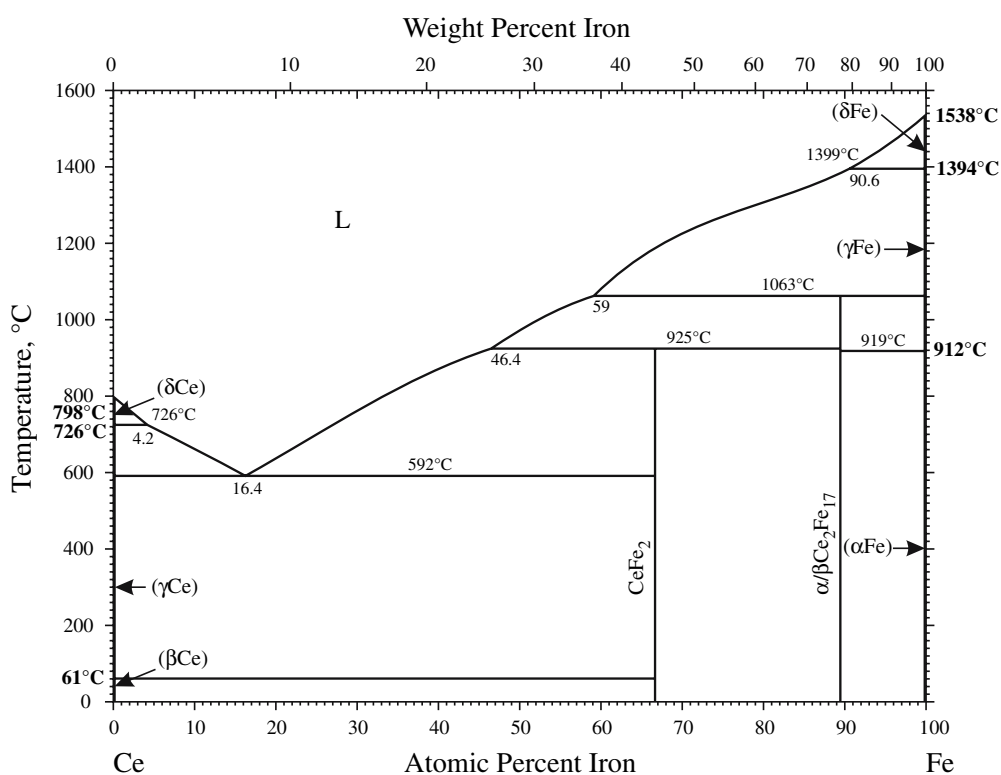


Fig. 1 Ce-Fe phase diagram

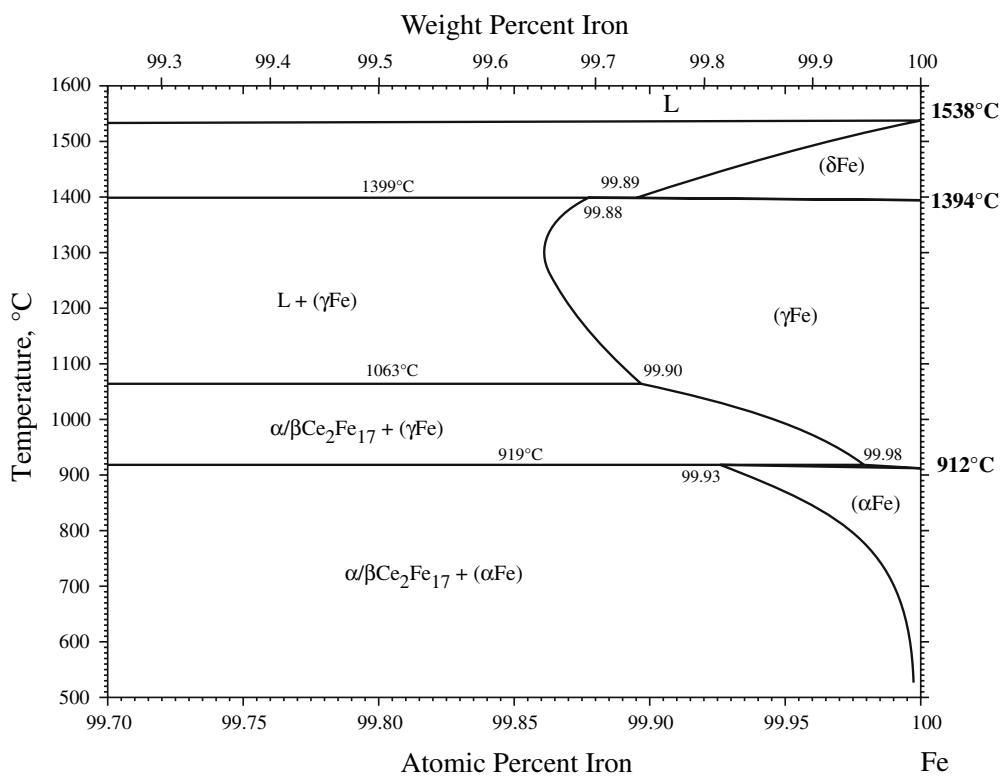


Fig. 2 Enlarged Fe-rich portion of the Ce-Fe phase diagram